

New Glass Vision System *GlassInspect* and Quality Visualization System (QVS) from Dr. Schenk

The new turnkey vision system *GlassInspect* from Dr. Schenk is the superior technical solution for your cold-end process and quality control.

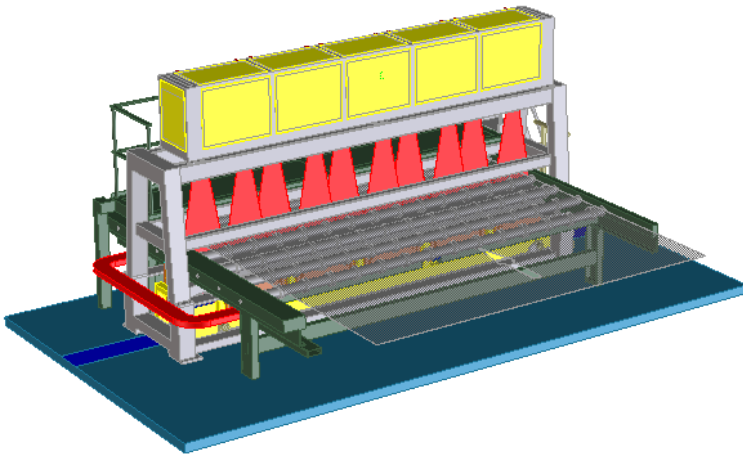


Figure 1: *GlassInspect* - Glass Vision System

This complete solution offers defect detection together with stress and thickness measurement. Combined with a valuable Quality Visualization System (QVS) it offers the modern solution for data archiving, as well as efficient process control.

Dr. Schenk On-Line Inspection System for Float Lines

The Dr. Schenk *GlassInspect* system for Float Glass is equipped with CCD line scan cameras and operates in transmission mode. High-performance cameras, developed by Dr. Schenk, are especially designed for the highly demanding inspection tasks involving sensitivity, high signal-to-noise ratio and high data rate.

The Dr. Schenk company has also developed a unique dual illumination concept that is perfectly adjusted to the inspection needs of flat glass. This proprietary two channel design accomplishes best image quality with the highest possible contrast of the defects to be detected. Operating simultaneously, two high resolution images are available for each defect to determine the correct core size, as well as the important distortion area of a defect. This innovative optical concept enables highest sensitivity and the most reliable differentiation between the different kinds of defects, including critical and non-critical defects, for an optimum quality control.

Optimized evaluation electronics and a user-friendly interface complement this comprehensive vision system.

The software version RESULT_Glass provides very comprehensive features for operating and adjusting and optimizing the system settings. Furthermore, it delivers very realistic high resolution defect images and provides tools for presenting and analyzing defects and process information. The very robust and flexible mechanical design of the camera frame and the illumination frame, which is ready for integration into your float line, are included in the scope of supply.

Glass Inspection for Highest Quality Demands

GlassInspect – Break Through in Float Glass Inspection

- ✓ Dual illumination concept for optimum defect detection and classification
- ✓ True measurement of real defect sizes
- ✓ High resolution and realistic defect images
- ✓ Extensive visualization tools for reliable process control
- ✓ Optimized electronics for highest processing speed
- ✓ More than 20 year experience in inspection of high quality flat panels and web material

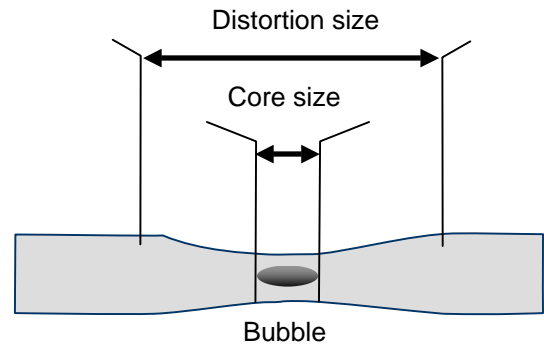
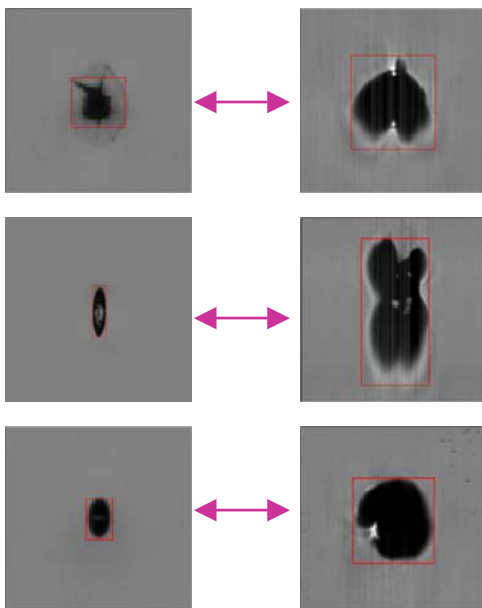


Figure 3: Example of distortion and core size



Defect images from channel 1 for core size evaluation

Defect images from channel 2 for distortion size

Figure 2: Reliable differentiation between critical and non critical defects for an optimum quality control, based on the information from TWO high resolution images of one defect

Optional Inspection and Measurement Channels

- ✓ Glass stress measurement in traversing mode
- ✓ Glass thickness measurement in traversing mode
- ✓ TIN channel

Optional Interfaces

- ✓ Cutting optimization
- ✓ Marking system

Accessories

- ✓ QVS – Quality Visualization System

For more information or further questions please contact your Dr. Schenk sales representative or email us at info@drschenk.com.