

EasyInspect & EasyMeasure



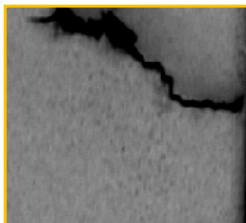
Powerful and Reliable Surface Inspection
for Coated Architectural and Interior Products

Architectural Applications

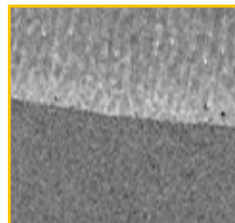


The perfect inspection solution for all types of coated architectural surfaces

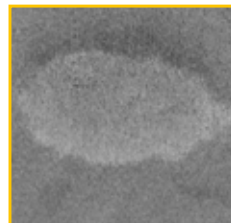
Crack in base material



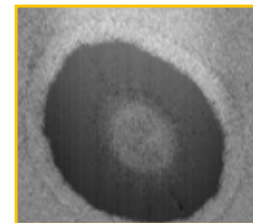
Extremely thick layer



Glossy spot



Dull spot



EasyInspect & EasyMeasure

KEY BENEFITS

- Better quality:
 - Reduced waste and higher quality of final products
 - Increased customer satisfaction through fewer returns
- Better cost efficiency:
 - Cost savings by replacing manual quality control
 - Increased productivity through early detection of process problems
- Better profit:
 - Enables a fully automated production and packaging line
 - Increased throughput of the production
 - Faster time-to-market for new products through immediate process feedback
- Better risk management through documented product quality



Versatile inspection for many products

Dr. Schenk's EasyInspect system is the perfect automatic surface inspection solution for all types of uniformly coated, flat architectural surfaces from doors, table tops and kitchen counters, to interior and exterior building panels.

EasyInspect and EasyMeasure offer high-performance, fully integrated, automatic inspection and give their customer a competitive advantage over other manufacturers.



The inspection solution is as versatile as the range of products that can be inspected. From small applications like coated furniture parts to regular doors or large building siding elements, all architectural products that have a flat surface and a uniform coating can be automatically inspected with EasyInspect and EasyMeasure.

Office and residential furniture are among the many coated products that can be inspected with EasyInspect



Ensures Quality, Improves Your Process

Applications

- Doors
- Interior furniture elements:
 - Table tops / kitchen counters
 - Cabinets
 - Wardrobes
 - Shelves
- Coated elevator doors and cabins
- Interior / exterior building panels
- and many more...



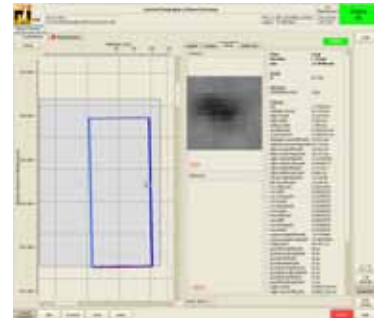
Exterior building siding panels can be inspected as easily as interior elements.

Superior flexibility for all applications

In a single production site, runs of products can change from day to day. Different colors, shapes, or coating steps must be accommodated. EasyInspect can adapt to these changes with a few clicks, making it the optimal solution for a versatile production environment.

Monitoring of the coating process

Dr. Schenk's EasyMeasure measures the overall properties, e.g. homogeneity, of the surface. The resulting data is displayed in an operator-friendly visualization and real time 2D map in cross and machine direction.



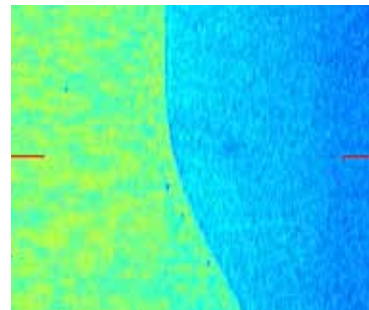
Local defects displayed in defect map

Superior quality documentation

The inspection data is stored in an SQL database and can be archived on a server. This reduces the risk of indemnification, as the production process is documented seamlessly on the manufacturer's side.

The complete inspection solution

EasyInspect is the only fully production-integrated, automatic optical inspection system that combines more than 25 years of experience with the latest technology. It is the best solution to save time, money and resources, and to improve the quality of the production.



Homogeneity map displaying coating properties

Your Reliable Partner



Dr. Schenk's production site

Dr. Schenk GmbH, established in 1985, is an innovative high-tech company based in Munich, Germany. For the third decade now, the range of products and services offered by Dr. Schenk comprises comprehensive solutions for automated quality assurance and production process monitoring for the flat glass, film and foil, converting, paper, solar, optical media and semiconductor industries. In these areas Dr. Schenk continues to set new standards for the inspection of surfaces through the utilization of the latest technical advances in optics and electronics.

The company's primary objective is to achieve complete satisfaction of our customers on a long-term basis. This vision is realized by a perfect synergy between innovative solutions and practical ideas. Global sales and service facilities ensure local support, technical service, training and consulting at any phase of a project. From modular standard units to complex and highly customized systems – Dr. Schenk's high performance test and inspection products have precision in focus!

For more information and contact details:
www.dr.schenk.com

Germany

Phone: +49-89-85695-0
Fax: +49-89-85695-200

USA

Phone: +1-651-730-4090
Fax: +1-651-730-1955

Korea

Phone: +82-2-527-1633
Fax: +82-2-527-1635

Taiwan

Phone: +886-2-2920-7899
Fax: +886-2-2920-8198

Hong Kong

Phone: +852-2425-1860
Fax: +852-2425-6775

China-Beijing

Phone: +86-10-6503-2159
Fax: +86-10-6503-2161

China-Shanghai

Phone: +86-21-5836-6700
Fax: +86-21-5836-6701

For further regional sales & service representatives please refer to www.dr.schenk.com

Dr. Schenk GmbH Industriemesstechnik

Einsteinstrasse 37 (Martinsried)
82152 Planegg
Germany