

## High-Speed In-line Inspection for Laminated Film 100% Quality and Process Control



Dr. Schenk solution for the inspection of laminated film

Laminated film products are used in a wide range of applications all of which demand a consistent level of quality. Bonding substrates by heat and/or pressure requires high quality base materials to prevent loss of time and yield during the lamination process.

The Dr. Schenk inspection solutions EasyInspect and EasyMeasure ensure the quality of the base material and of the finished product. The advanced Dr. Schenk technology monitors and reports production quality, covering 100% of the material.

### YOUR BENEFITS

#### Cost Savings with Superior Technology

- Improved defect detection and classification through Multiple Image Defect Analysis (MIDA)
- Super-fast cameras allow multiple optical channels in one camera line
- Reduced costs and installation space through Twin-Line illumination – 2 optical channels in one illumination

#### Unparalleled User-Friendliness

- Easy and automatic creation of classification rules with the Auto-Classifer
- Configurable reports with the Dr. Schenk Reporting Tool

#### 100% Material Monitoring

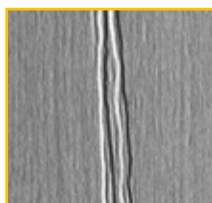
- Easy Measure for 100% monitoring of the material properties e.g. haze, thickness, and many more



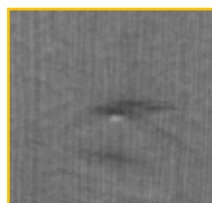
Coating Voids



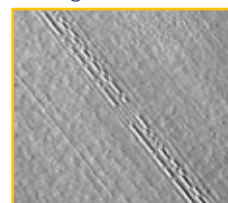
Wrinkle



Contamination



Gluing Defect



## Complete MIDA solution for laminated film production

With Dr. Schenk's unique Multiple Image Defect Analysis (MIDA) all kinds of laminated film defects can be fully analyzed in one inspection run. Thanks to ultra-high speed illumination switching and multiple optical channels per camera line all issues can be detected and classified with more information per defect, at higher production speed, than any other inspection technology can.

With MIDA, the same defect can be viewed in transmission and reflection, as well as in Brightfield and Darkfield, ensuring optimum inspection results for the whole range of possible defect types.

The system alerts the operator early to process problems before the defect limit is reached. This allows him to fix the production before waste is produced.



## Benefits of automated optical inspection and simultaneous monitoring of laminated film

The Dr. Schenk inspection solutions provide complete process control and defect classification. This helps manufacturers to gain maximum yield and deliver quality produce. The inspection of local defects and the measurement of lamination properties, such as layer thickness and homogeneity, are performed at production speed without any delays. Real-time feedback into the production line helps to achieve process optimization quickly and reliably.

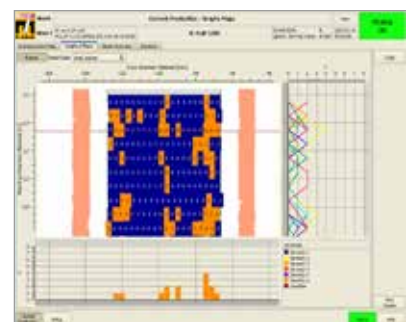
### Monitoring material properties

Correct monitoring of material is a crucial component for the quality of any web material. Dr. Schenk's EasyMeasure generates a homogeneity map of layer properties (i.e. thickness, surface structure, transmittance) for the full width of the material.

A range of false color displays is available to highlight different aspects of the material homogeneity.



*Detecting local defects in laminated film (top) and monitoring material properties (bottom)*



### About Dr. Schenk

Dr. Schenk GmbH offers inspection and measurement solutions for automated quality assurance and production process control - a key success factor in the making and converting of many materials, e.g. plastics, textile materials, nonwovens, paper, metal, or glass, for a multitude of markets like display glass, automotive, packaging, medical, renewable energy, and many more. From modular standard units to highly customized systems – Dr. Schenk's solutions have your material in focus!

## CONTACT

Dr. Schenk GmbH Industriemesstechnik

### Headquarters

Bussardstr. 2  
82166 Graefelfing  
GERMANY

Phone: +49-89-85695-0  
Fax: +49-89-85695-200

For more Dr. Schenk locations and regional sales & service partners go to:  
[www.dr.schenk.com/contact.html](http://www.dr.schenk.com/contact.html)